

Don't forget our  
PC automated  
motor options.  
See web site  
for info.

**MoonLite**  
Telescope Accessories

[www.focuser.com](http://www.focuser.com) • (570) 275-7935

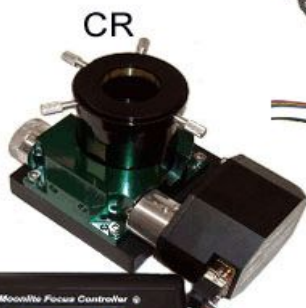
*The Way You View*  
**THE UNIVERSE**  
*Is About To*  
**CHANGE**



[www.focuser.com](http://www.focuser.com)

# Installing your MoonLite High Res Stepper Controller

High Res Stepper Motor with  
MoonLite 2-Speed DRO Display controller

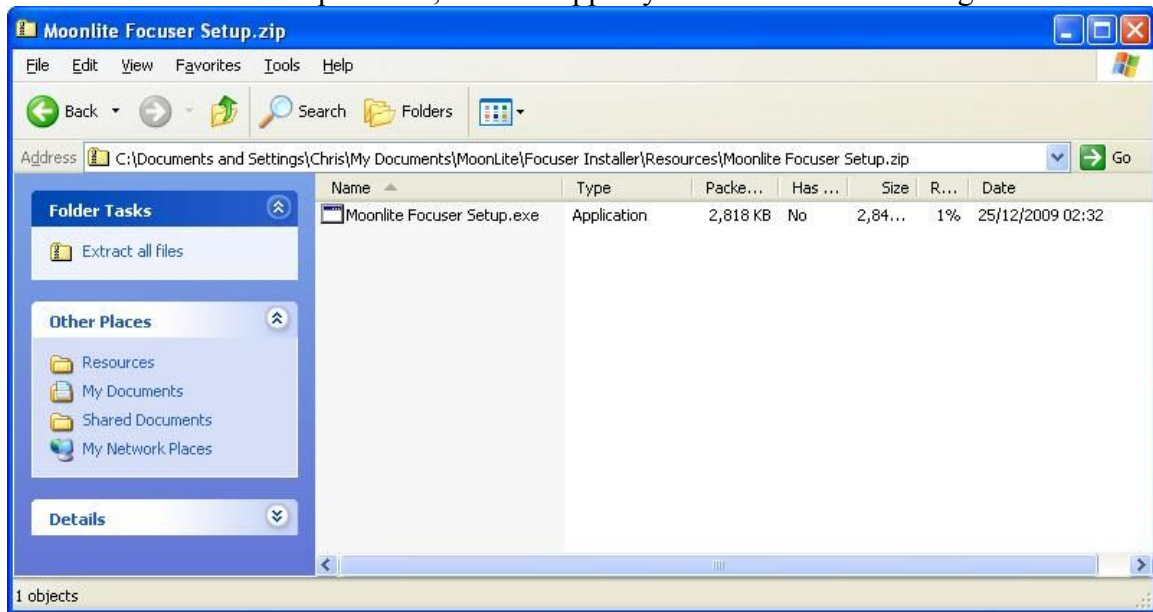


## **Download the Driver**

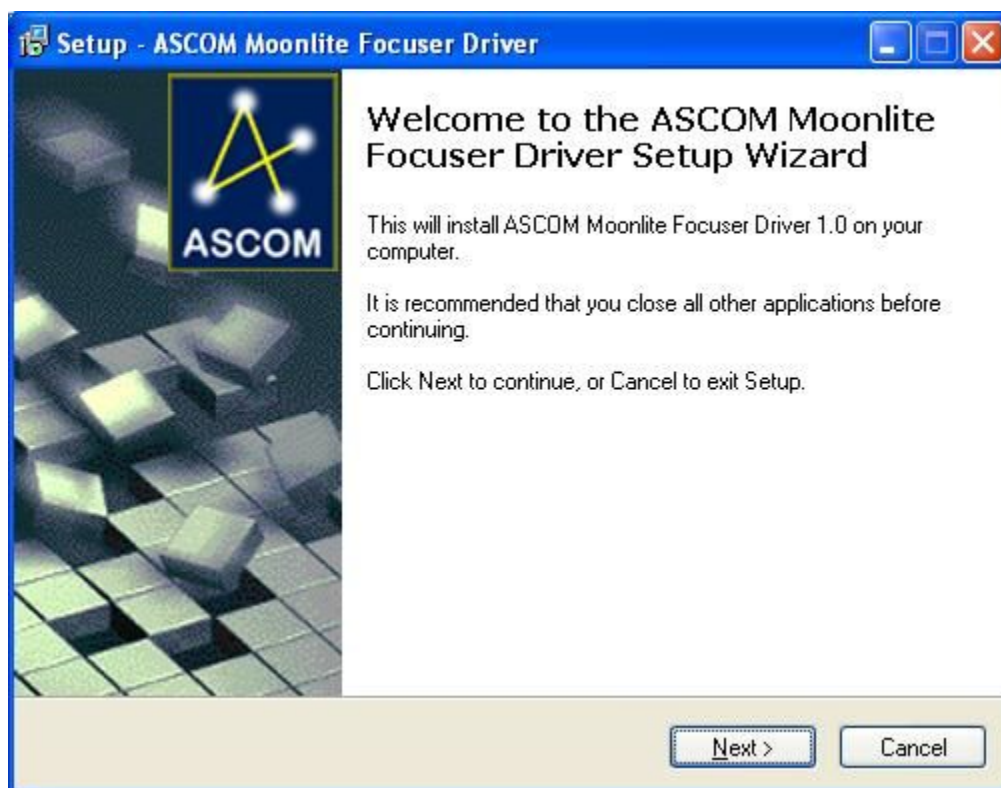
*\*Please refer to the last page of this manual if you are connecting your controller via USB. There you will find instructions on downloading the FTDI driver needed.*

The MoonLite Installation Driver is available here:  
[www.focuser.com/media/Moonlite Focuser Setup.zip](http://www.focuser.com/media/Moonlite%20Focuser%20Setup.zip)

You must first unzip the file; once unzipped you should see something like this:



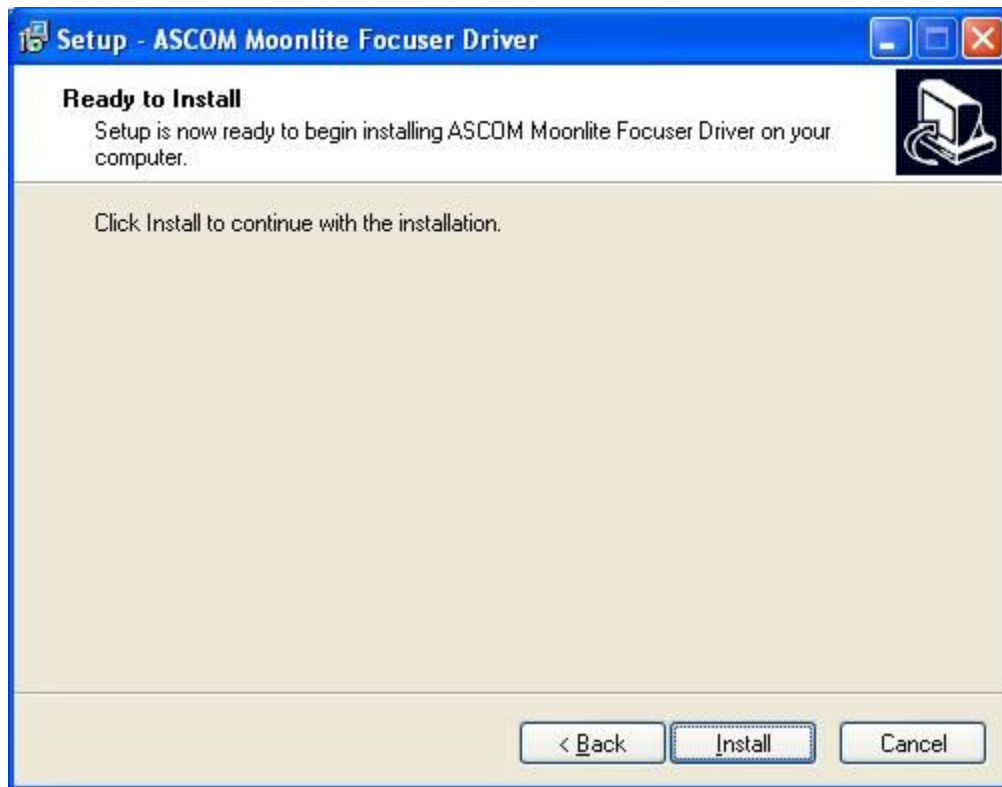
Double click the “Moonlite Focuser Setup.exe” file; the installer will then launch. You may need to give your PC permission to install the file. You will see:



Note:

You may see a message warning that the ASCOM platform is not installed. If so, install ASCOM platform 5. This is available from the ASCOM site: <http://ascom-standards.org/index.html> . We recommend that you also download and install the ASCOM Platform 5.5 update because this will help with some issues with using Vista or Windows 7 PCs.

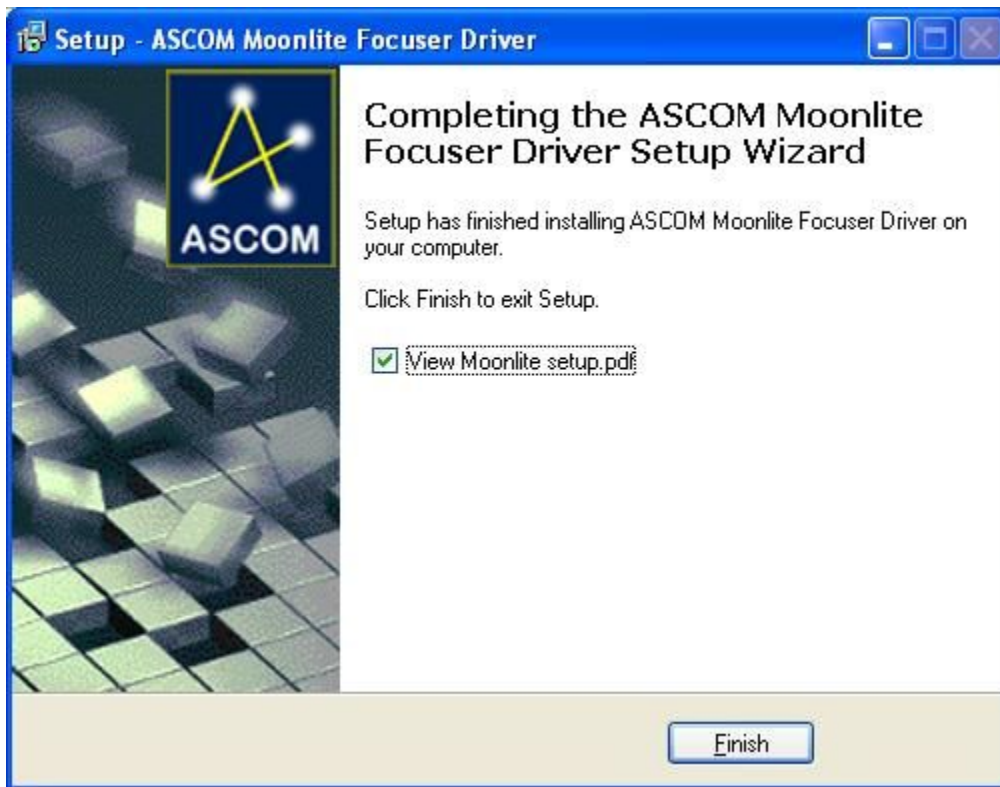
Click “Next” and you will then see.



Click “Install”... This will install the focuser driver.



This window will be shown when the installation is complete.



Click on “Finish”. These installation notes will be shown unless you uncheck the “View Moonlite setup.pdf” check box. This maintains the tradition that software shown the installation instructions after you have done the installation.

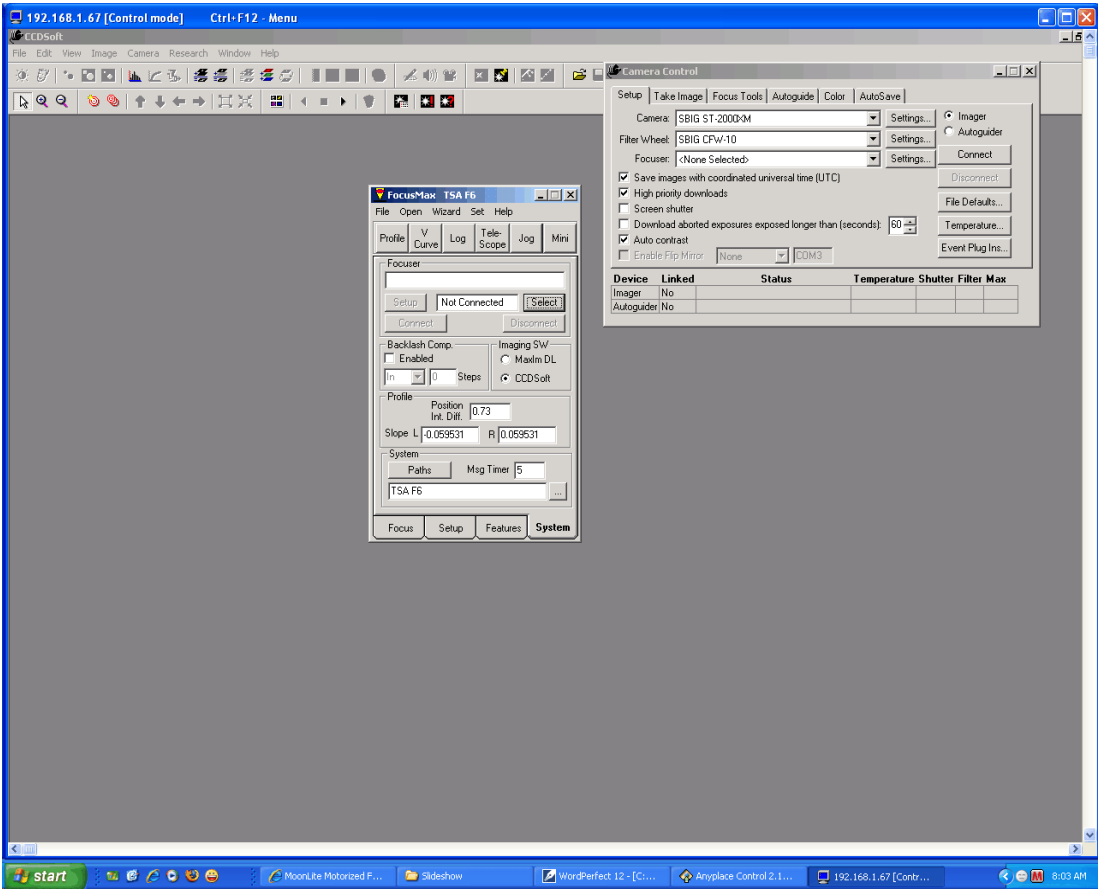
This completes installing the Moonlite focuser. It should now be able to be selected by choosing the Moonlite Focuser option in the ASCOM focuser chooser.

Note:

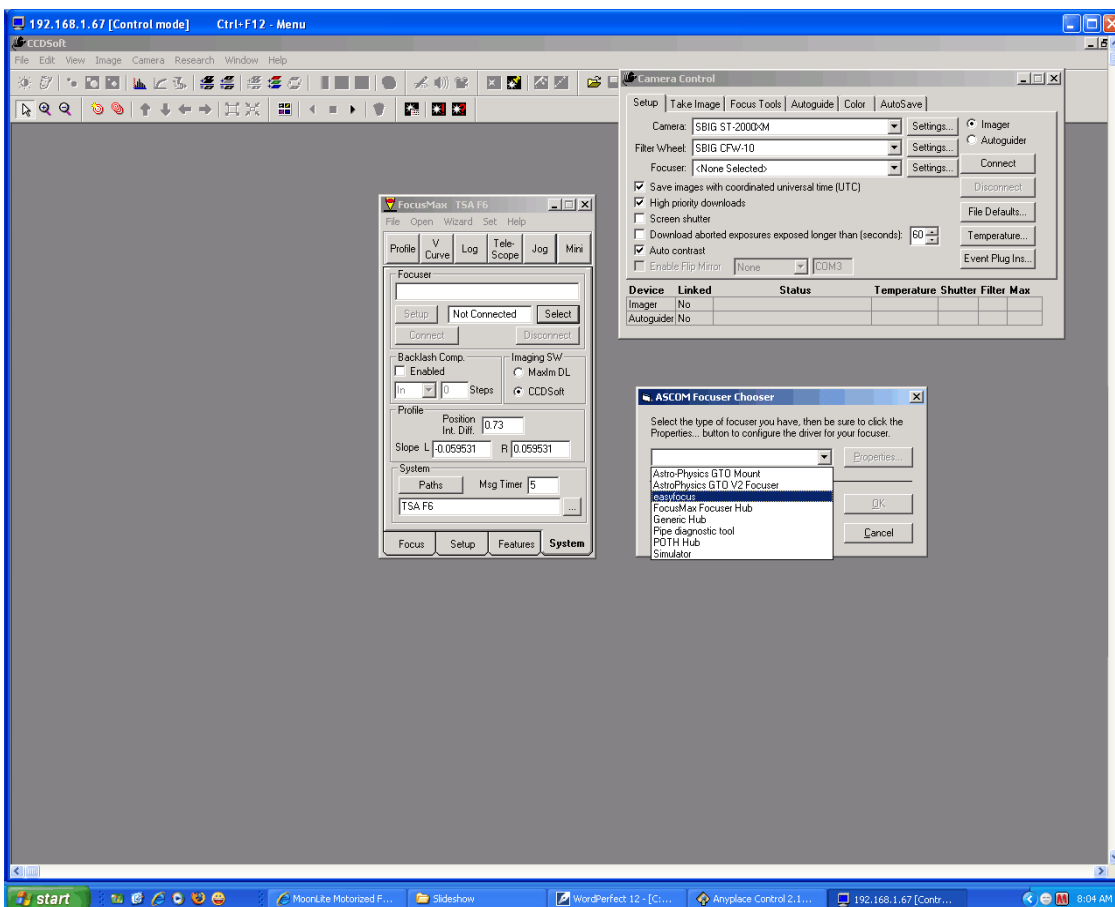
The Moonlite focuser uses the EasyFocus driver. It has been named Moonlite Focuser but if you need to use it in a program or script the ProgID is “easyfocus.focuser”.

Next open “FocusMax” and your camera control software, either “Maxim DL” or “CCDSOft”.

For the purpose of this help file we are using “FocusMax” and “CCDSOft”. Open “FocusMax” and click on the “System” tab. You should be presented with a screen similar to this:

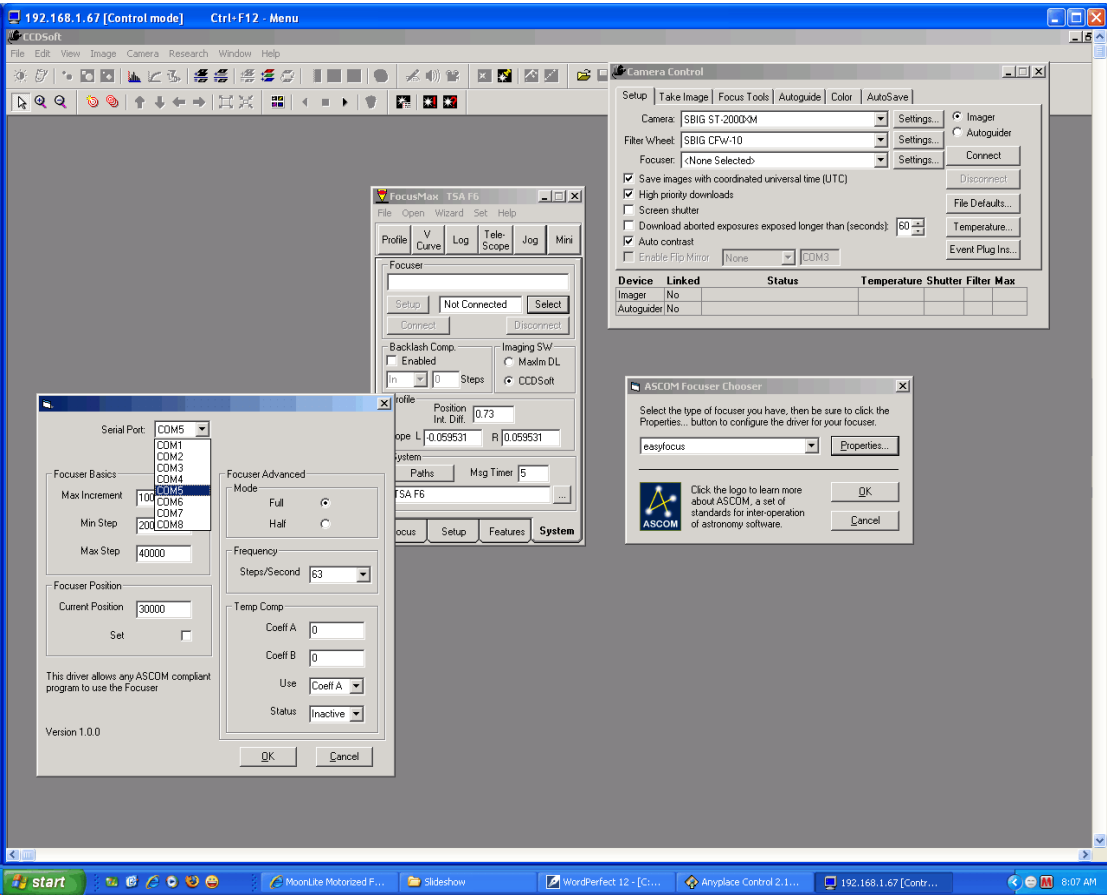


Click the “Select” button and chose “Moonlite Focuser”.



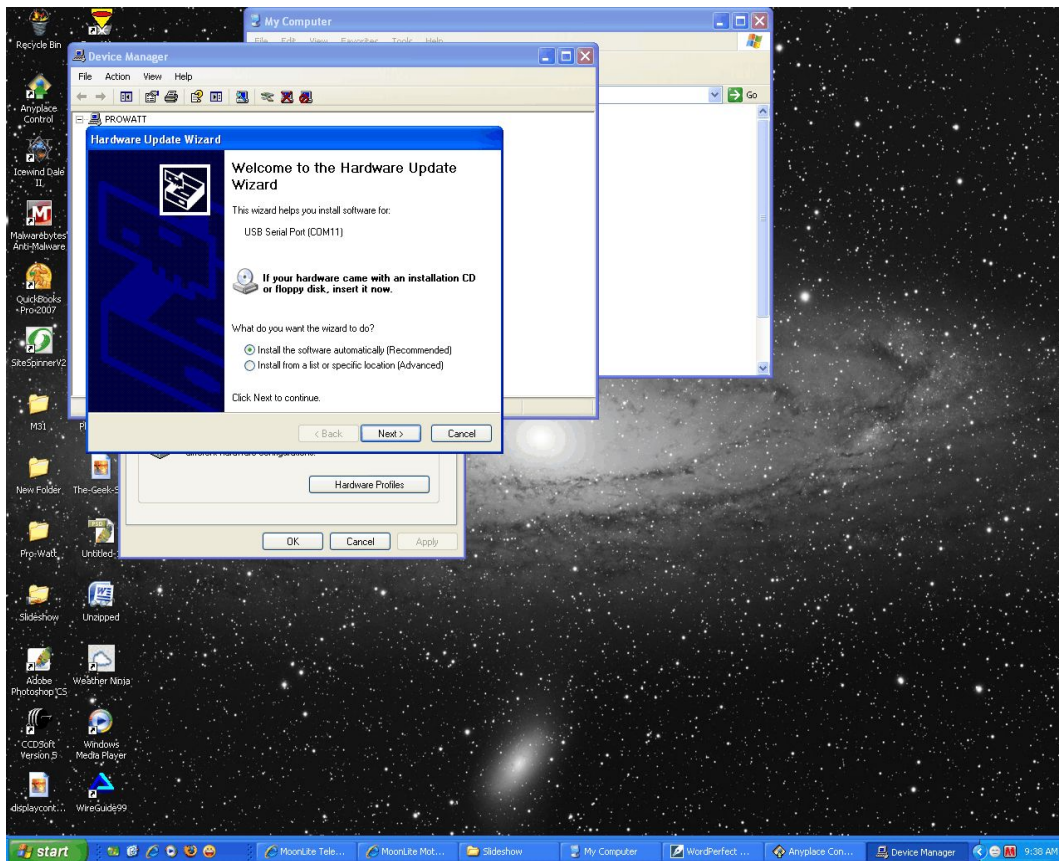


Click “properties”. Next you will need to chose the correct com port that is connected to your stepper motor controller. Click “Ok”. That’s it. You should now be connected to your “MoonLite High Res Stepper motor and Controller”. If you are having trouble finding the correct com port please see the following section on com port and USB use.



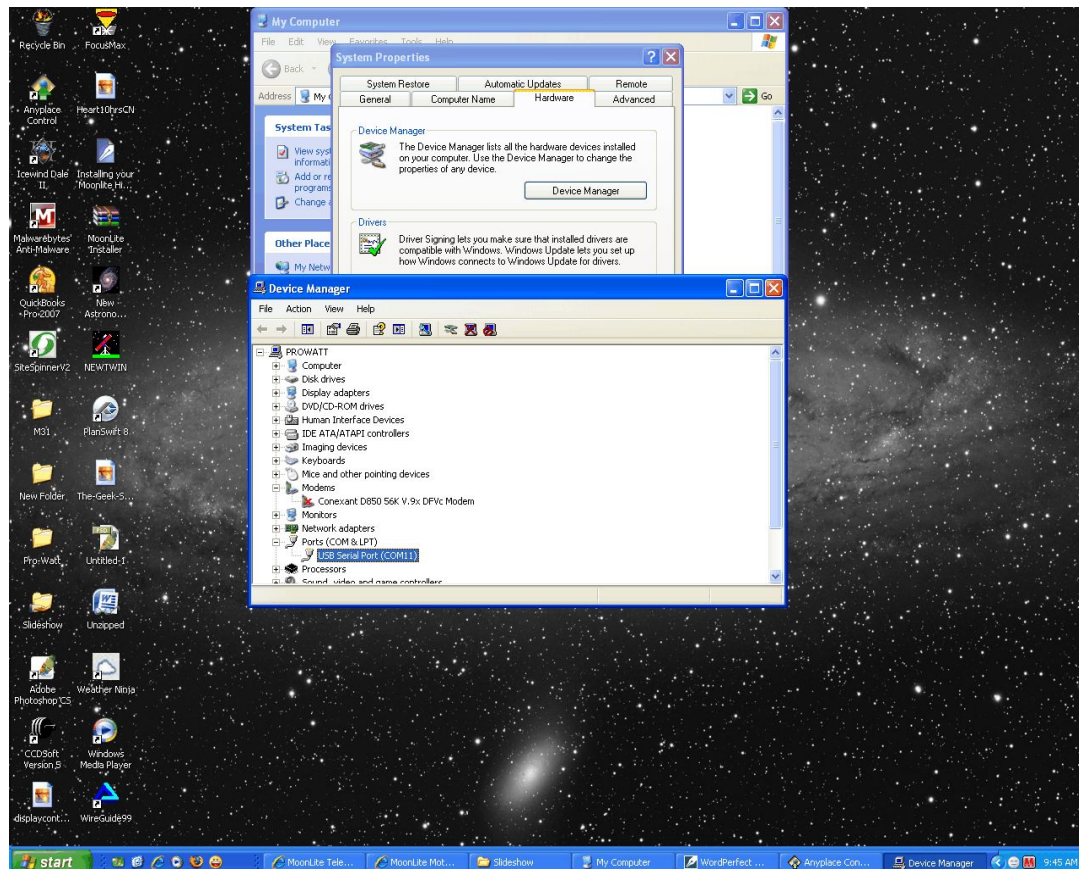
## Com Port Selection and USB Connections

Should you decide to connect your controller via USB you will first need to install the “FTDI” driver. This driver is freely available from Microsoft. Apply power to your “MoonLite Hi Res Stepper Controller” and plug in the supplied USB cable to your CPU. If you don’t already have a “FTDI” driver installed on your CPU Windows will prompt you for a driver, simply let Windows find the driver. Select the “Install software automatically (Recommended)” radio button. Click “Next”. Windows will connect to the internet to find the appropriate driver.

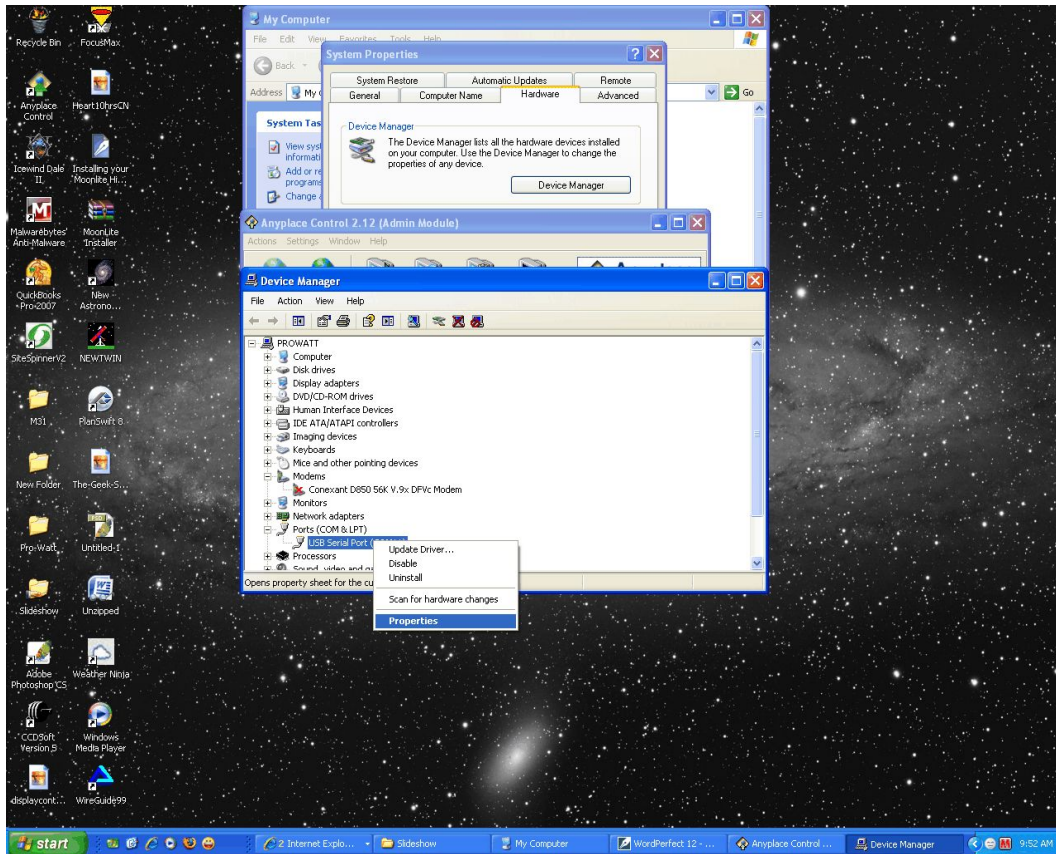


The next step would be to find the com port that windows has assigned to your “Moonlight Hi Res Stepper controller”. To do this go to “My Computer”. Right click inside the “My Computer” window and select “Properties”. Click on the “Hardware” tab. Now click on “Device Manager”.

Under “Device manager” you will find a “+” symbol next to “Ports (Com&LPT)” click the “+” symbol. There you will see something similar to the screen shot below. In this case it is “USB Serial Com Port(Com11)”. This is the Com port number assigned to the MoonLite Hi Res Stepper controller. If you have a few com ports to chose from and are unsure which Com port your focuser is connected to simply take note of the com ports listed. Unplug the controllers USB cable and take note of which Com port is now missing. This is the com port that your controller is connected to. Now plug the USB cable back in and continue. FocusMax only accepts Com ports ranging from 1 to 8. So we must change the Com ports number to one of these acceptable values. If your Com port ranges from 1-8 then there is no need to change it.

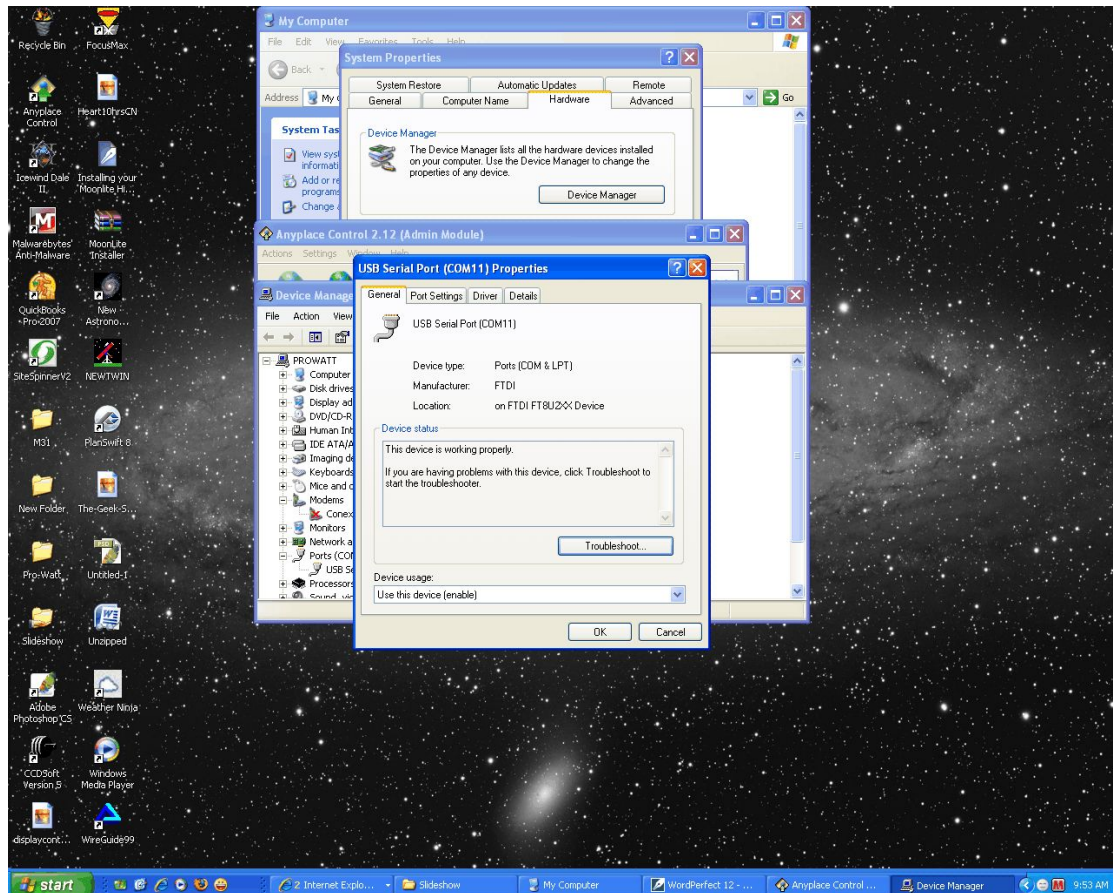


Right click on the Com port and chose “Properties”.

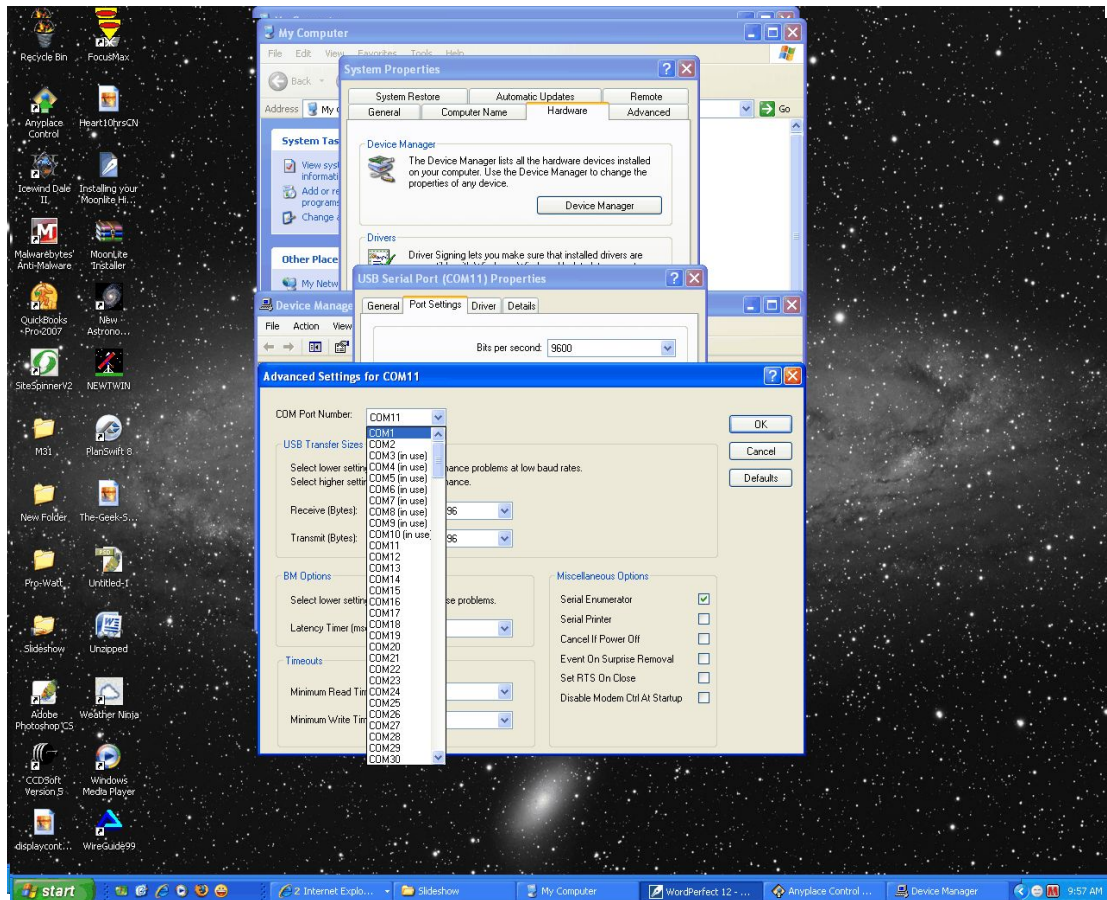




Click the “Port Settings Tab”



Next click “Advanced”



In the “Com Port Number” box select a number that is 8 or less, in this case I have chosen Com port 1.

Make a note of the Com port number that you have assigned to your “MoonLite Hi Res Stepper Controller”. You will use this Com port number in FocusMax or any other ASCOM compatible program of your choice for communicating with your “MoonLite Hi Res Stepper Controller”. Click “Ok” and close device manager and all associated windows. Your “MoonLite Hi Res Stepper Controller” is now ready for use. For any questions specific to “Focus Max”, “CCDSOft”, or “MaximDL” please reference the manufacturers “Help” files. Thank you for choosing MoonLite and steady skies.